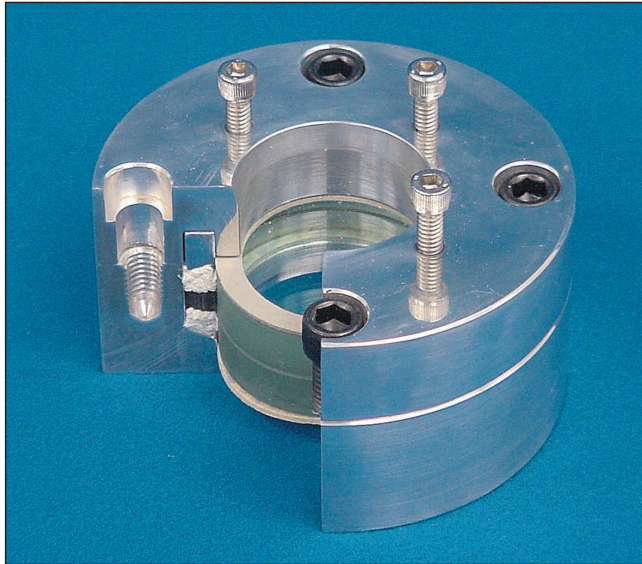




## Model B Weld

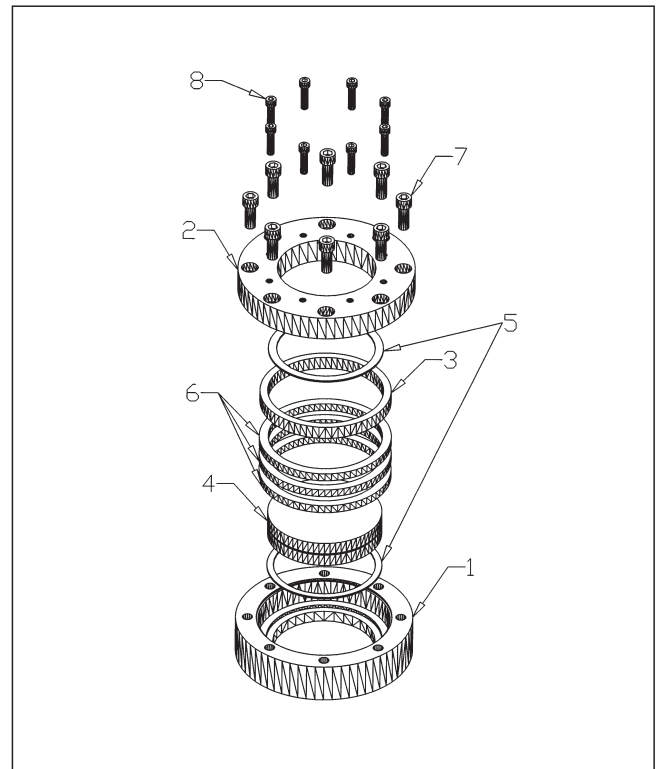


### Description:

The Model B Weld unit, with its bolt-down lens retainer cap, is designed for adaptation to new or existing equipment to become an integral part of a vessel shell, vessel head, man-way cover or in a pipeline system. It is available with the weldment contoured to fit a specific radius (cylindrical or spherical) and can be mounted flush with the interior or directly to the outside of the vessel shell. The unit can be designed for sizes from 2" to 24." Units can be manufactured to meet your pressure and temperature requirements, and different materials of construction are available to meet your process needs. The Model B Weld can be utilized with other types of connections including butt-weld, socket-weld, pipe thread, or sanitary. Units can be supplied with built-in spray ring or wiper.

### Materials of Construction:

- 1. Body:** 316 or 304 Stainless Steel SA-351 or SA-240; Carbon Steel PVQ; Hastelloy; Alloy 20; Titanium; Aluminum; etc.
- 2. Retainer Cap:** 316 or 304 Stainless Steel SA-351 or SA-240; Carbon Steel PVQ
- 3. Compression Ring:** 304 Stainless Steel SA-351; Carbon Steel SA-519
- 4. Lens:** Two-Piece Laminated Tempered Soda Lime (Standard); Tempered or Annealed Borosilicate; Quartz; Lexan; Acrylic; Mica Shields
- 5. Lens Cushion Gaskets:** Teflon<sup>®</sup>; Grafoil<sup>®</sup>; Gylon<sup>®</sup>; Blue-Gard<sup>®</sup>; etc.
- 6. Lens Packing:** Combination Teflon<sup>®</sup> Impregnated and Viton<sup>®</sup> (Standard); Graphite; FDA Teflon<sup>®</sup>; etc.
- 7. Retainer Cap Bolts:** 18-8 Stainless Steel; Carbon Steel SA-193
- 8. Compression Screws:** 18-8 Stainless Steel; Carbon Steel SA-193



MADE IN THE USA

