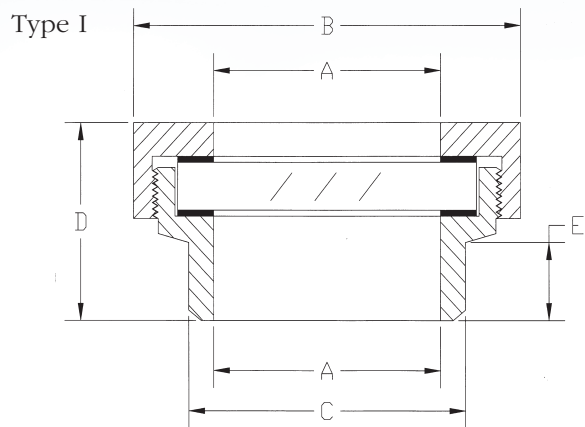
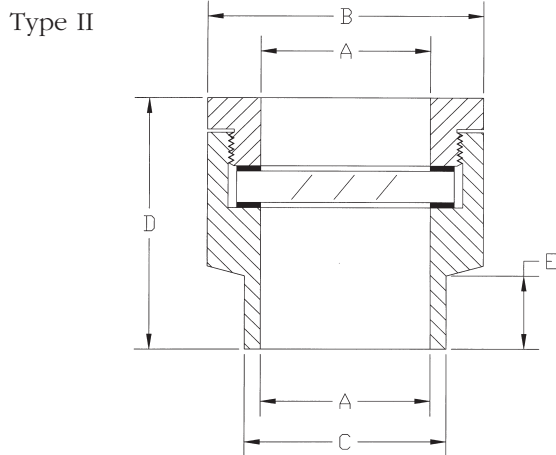


# Type I & II – with Threaded Retainer Cap

## Engineering Information:



Size	A	B	C	D	E
65	2 <sup>9</sup> / <sub>16</sub>	4 <sup>3</sup> / <sub>8</sub>	3 <sup>1</sup> / <sub>8</sub>	2 <sup>1</sup> / <sub>16</sub>	<sup>13</sup> / <sub>16</sub>
80	3 <sup>1</sup> / <sub>8</sub>	4 <sup>9</sup> / <sub>16</sub>	3 <sup>11</sup> / <sub>16</sub>	2 <sup>1</sup> / <sub>4</sub>	<sup>7</sup> / <sub>8</sub>
100	3 <sup>15</sup> / <sub>16</sub>	5 <sup>9</sup> / <sub>16</sub>	4 <sup>1</sup> / <sub>2</sub>	2 <sup>11</sup> / <sub>16</sub>	1 <sup>1</sup> / <sub>4</sub>
125	4 <sup>15</sup> / <sub>16</sub>	6 <sup>9</sup> / <sub>16</sub>	5 <sup>3</sup> / <sub>8</sub>	2 <sup>1</sup> / <sub>4</sub>	<sup>3</sup> / <sub>4</sub>



Size	A	B	C	D	E
65	2	3 <sup>1</sup> / <sub>4</sub>	2 <sup>3</sup> / <sub>8</sub>	3	<sup>7</sup> / <sub>8</sub>
80	3	4 <sup>1</sup> / <sub>4</sub>	3 <sup>1</sup> / <sub>2</sub>	3 <sup>1</sup> / <sub>4</sub>	<sup>7</sup> / <sub>8</sub>
100	4	5 <sup>1</sup> / <sub>4</sub>	4 <sup>1</sup> / <sub>2</sub>	3 <sup>1</sup> / <sub>2</sub>	1
125	5	6 <sup>1</sup> / <sub>4</sub>	5 <sup>5</sup> / <sub>8</sub>	3 <sup>3</sup> / <sub>4</sub>	1 <sup>1</sup> / <sub>16</sub>